

CERTIFICATE

The Company

Dongguan Changlian New Materials Technology Co., Ltd.
Sanlian Science Park,
Jingxiang Liaobu Town,
Dongguan, Guangdong, CHINA

is granted authorisation according to ECO PASSPORT by OEKO-TEX® to use the OEKO-TEX® mark

OEKO-TEX®
CONFIDENCE IN TEXTILES
ECO PASSPORT 

BEXA 081903 TESTEX

Textile chemicals. Tested and verified.
www.oeko-tex.com/ecopass



for the following chemical products

Product(s): See attached enclosure

Category: Textile auxiliaries for dyeing and printing

Supporting documents

- Declaration of conformity in accordance with EN ISO 17050-1 included in ECO PASSPORT by OEKO-TEX® Terms of Use.
- Analytical test report number: BJ150 152637.1
- RSL Screening Report
- Detailed information about the components and safety data sheets of the chemical products mentioned above.

The above captioned product(s) can be used for the production of human-ecological optimized textiles. The combined results of the reports mentioned above reveal that there is no harmful effect on the human and environmental health of the textiles treated/finished with the above mentioned products. This evaluation used the test methods and requirements of the ECO PASSPORT by OEKO-TEX® that were in force at the time of the evaluation date. ZDHC MRS L Conformance Level 1 is achieved for certified product(s) without restriction(s).

The certificate BEXA 081903 is valid until 30.04.2020

Zürich, 30.04.2019

Mätz Bachmann
Managing Director
TESTEX AG

Mary Rose Egloff
Customer Service Ecology Manager
TESTEX AG

Enclosure to Certificate No. BEXA 081903

ECO PASSPORT by OEKO-TEX®

OEKO-TEX® - International Association for Research and Testing in the Field of Textile and Leather Ecology.



OEKO-TEX®
CONFIDENCE IN TEXTILES
ECO PASSPORT 

Company

Dongguan Changlian New Materials Technology Co., Ltd.
Sanlian Science Park,
Jingxiang Liaobu Town,
Dongguan, Guangdong, CHINA

ECO PASSPORT by OEKO-TEX® Lab Report No.

BJ150 152637.1

ECO PASSPORT by OEKO-TEX® Certified Products

No.	Product name	Trade name	Restriction(s) ¹	ZDHC LEVEL
1	Clear printing paste: 9988C, 6800C, 2900C, 3900C, 1500C, 608C, 609C, S626, E40, 400C, 3711C, 655C, 203C, 2277C, 3399C, 9433C, 300C, 6900C, 135C, 308C, H222C, 511C, 9422C, 2288C, 2299C, 9140C, L40, GN40, PTF-312E, M1206, M1204, 985, B-1000	Clear printing paste	none	Level 1
2	White printing paste: 9988, 6800, 2900, 3900, 1500, 608, 609, 388, 399, 400, 3711, 655, 203, 2277, 3399, 9433, 300, 6900, 135, 308, H222, 511, 9422, 2288, 2299, 9140, 4511, 888, 299, 368, CP810, SL-200, H6000	white printing paste	none	Level 1

Issue Date 30.04.2019

¹ Restriction(s): The parameter(s) mentioned under Restriction(s) have to be checked on the treated textile for compliance with the regulations of STANDARD 100 by OEKO-TEX®.



REGISTERED

Dongguan Changlian New Materials Technology Co., Ltd.
Ms. Wenai Zhao
Sanlian Science Park
Jingxiang Liaobu Town,
Dongguan, Guangdong, 523419
China

Fax in advance: 769 83215608

E-mail in advance: wenai.zhao@dg-clt.com

Zurich, 30.04.2019 / chnd

TEST REPORT NO. BJ150 152637.1

Page 1 of 11

Test material: 2 samples of paste 9988 and 9988C.

SUBJECT OF ANALYSIS

According to your order dated 08.03.2019 analysis should be carried out on the samples received on 27.03.2019. This order and the tests carried out are related to the application for renewal of your ECO PASSPORT by OEKO-TEX® BEXA 081903.

RESULTS OF ANALYSIS

The results of the analysis we have carried out are summarized in the following tables.

SUMMARY

The test methods and requirements according to ECO PASSPORT by OEKO-TEX® were used as basis of evaluation of the products.

The test results show that the printing pastes do not contain substances regarded as harmful according to the standards of ECO PASSPORT and are therefore suitable for use without restriction in the production of human ecologically-optimized textiles provided the manufacturer's instructions are observed during the application.

Please find your ECO PASSPORT BEXA 081903 together with the corresponding RSL-Report enclosed with this test report. The period of validity has been extended by another year.

Swiss Textile Testing Institute
TESTEX AG


Mary Rose Egloff

Customer Service Ecology Manager


Chantal Ndongo
Customer Service Officer

Enclosures mentioned

cc: TESTEX Beijing

Die Ergebnisse beziehen sich nur auf die Prüfmuster. Die auszugsweise Vervielfältigung unserer Berichte ist nur mit schriftlicher Genehmigung der TESTEX AG gestattet.
The test results only relate to the test samples. Partial reproduction of our reports are only allowed with written approval of TESTEX AG.



RE 152637.1

proven since 1846

OVERVIEW

Please refer to overview table and table of result for failed samples.

p: tested and passed; X: tested and failed; d: done; ' ': not tested

	Sample No.									
	1	2								
Chlorinated Benzenes & Toluenes ECO PASSPORT by OEKO-TEX® Method 12	p	p								
Chlorinated Phenols and OPP ECO PASSPORT by OEKO-TEX® Method 5	p	p								
Heavy Metals ECO PASSPORT by OEKO-TEX® Method 3	p	p								
PFCs (Per- and polyfluorinated compounds) ECO PASSPORT by OEKO-TEX® Method 9	p	p								
Plasticisers ECO PASSPORT by OEKO-TEX® Method 6	p	p								
Polycyclic Aromatic Hydrocarbons (PAH) ECO PASSPORT by OEKO-TEX® Method 13	p	p								
Short Chained Chlorinated Paraffins (SCCPs) ECO PASSPORT by OEKO-TEX® Method 8	p	p								
Surfactants, Wetting Agent Residues ECO PASSPORT by OEKO-TEX® Method 15	p	p								
VOCs (Volatile Organic Compounds) ECO PASSPORT by OEKO-TEX® Method 19	p	p								

No. 1: 9988 paste for printing white

No. 2: 9988C paste for printing light yellow

1

2

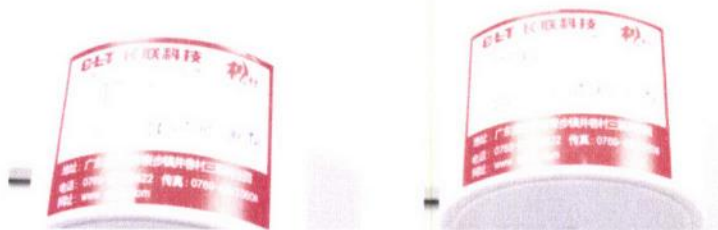


TABLE OF RESULTS

		#1 9988 paste for printing white	#2 9988C paste for printing light yellow
Heavy Metals ECO PASSPORT by OEKO-TEX® Method 3 [ECP - testing items ECO PASSPORT by OEKO-TEX]		ECO PASSPORT threshold value	
No. of tests		1	1
• Chromium total	[mg/kg] <=100	<5.0	<5.0
• Manganese	[mg/kg] <=1000	6.1	<5.0
• Iron	[mg/kg] <=2500	29	21
• Cobalt	[mg/kg] <=500	<5.0	<5.0
• Nickel	[mg/kg] <=200	<5.0	<5.0
• Copper	[mg/kg] <=250	24	<5.0
• Zinc	[mg/kg] <=1500	115	<5.0
• Arsenic	[mg/kg] <=50	<5.0	<5.0
• Selenium	[mg/kg] <=20	<5.0	<5.0
• Silver	[mg/kg] <=100	<5.0	<5.0
• Cadmium	[mg/kg] <=20	<5.0	<5.0
• Tin	[mg/kg] <=250	<5.0	28
• Antimony	[mg/kg] <=50	<5.0	<5.0
• Barium	[mg/kg] <=100	10	<5.0
• Mercury	[mg/kg] <=4	<0.50	<0.50
• Lead	[mg/kg] <=90	5.3	<5.0

#1	#2
9988 paste	9988C
for printing	paste for
white	printing
	light yellow

Chlorinated Phenols and OPP ECO PASSPORT by OEKO-TEX® Method 5 [ECP - testing items ECO PASSPORT by OEKO-TEX]		ECO PASSPORT threshold value	#1	#2
No. of tests			1	1
• OPP (Orthophenylphenol)	[mg/kg]	<100	<0.05	<0.05
• Pentachlorophenol (PCP)	[mg/kg]	<0.50	<0.01	<0.01
• 2,3,5,6-TeCP	[mg/kg]		<0.01	<0.01
• 2,3,4,6-TeCP	[mg/kg]		<0.01	<0.01
• 2,3,4,5-TeCP	[mg/kg]		<0.01	<0.01
• Tetrachlorophenols (TeCP, Sum)	[mg/kg]	<0.50	<0.01	<0.01
• 2,3,4-TrCP	[mg/kg]		<0.05	<0.05
• 2,3,5-TrCP	[mg/kg]		<0.05	<0.05
• 2,3,6-TrCP	[mg/kg]		<0.05	<0.05
• 2,4,5-TrCP	[mg/kg]		<0.05	<0.05
• 2,4,6-TrCP	[mg/kg]		<0.05	<0.05
• 3,4,5-TrCP	[mg/kg]		<0.05	<0.05
• Trichlorophenols (TrCP, Sum)	[mg/kg]	<2.0	<0.05	<0.05
• 2,4/2,5-DCP	[mg/kg]		<0.05	<0.05
• 2,6-DCP	[mg/kg]		<0.05	<0.05
• 2,3-DCP	[mg/kg]		<0.05	<0.05
• 3,4-DCP	[mg/kg]		<0.05	<0.05
• 3,5-DCP	[mg/kg]		<0.05	<0.05
• Dichlorophenols (DCP, Sum)	[mg/kg]	<5.0	<0.05	<0.05
• 2-MCP	[mg/kg]		<0.05	<0.05
• 3-MCP	[mg/kg]		<0.05	<0.05
• 4-MCP	[mg/kg]		<0.05	<0.05
• Monochlorophenols (MCP, Sum)	[mg/kg]	<5.0	<0.05	<0.05
• Phenol	[mg/kg]	<500	<2.0	<2.0

#1	#2
9988 paste	9988C
for printing	paste for
white	printing
	light yellow

Plasticisers ECO PASSPORT by OEKO-TEX® Method 6 [ECP - testing items ECO PASSPORT by OEKO-TEX]		ECO PASSPORT threshold value	#1	#2
No. of tests			1	1
• DEP	[mg/kg]		<10	<10
• DPrP	[mg/kg]		<10	<10
• DIBP	[mg/kg]		<10	<10
• DBP	[mg/kg]		<10	<10
• DMEP	[mg/kg]		<10	<10
• DIPP	[mg/kg]		<10	<10
• NPIPP	[mg/kg]		<10	<10
• DPP	[mg/kg]		<10	<10
• DIHxP	[mg/kg]		<10	<10
• DHxP	[mg/kg]		<10	<10
• BBP	[mg/kg]		<10	<10
• DIHP*	[mg/kg]		<10	<10
• DIOP	[mg/kg]		<10	<10
• DCHP	[mg/kg]		<10	<10
• DEHP	[mg/kg]		<10	<10
• DNOP	[mg/kg]		<10	<10
• DINP*	[mg/kg]		<10	<10
• DNP	[mg/kg]		<10	<10
• DIDP	[mg/kg]		<10	<10
• DUP*	[mg/kg]		<10	<10
• Sum	[mg/kg]	<250	<10	<10
• * Components of DHNUP				
• TCEP	[mg/kg]	<100	<10	<10
• Bisphenol A	[mg/kg]	<250	<10	<10
• D4 (Octamethylcyclotetrasiloxane)	[mg/kg]	<1000	<10	<10
• D5 (Decamethylcyclopentasiloxane)	[mg/kg]	<1000	<10	<10
• D6 (Dodecamethylcyclohexasiloxane)	[mg/kg]	<1000	<10	<10
• DMP	[mg/kg]		<10	<10



#1 #2
9988 paste 9988C
for printing paste for
white printing
light yellow

Short Chained Chlorinated Paraffins (SCCPs) ECO PASSPORT by OEKO-TEX® Method 8 [ECP - testing items ECO PASSPORT by OEKO-TEX]		ECO PASSPORT threshold value		
No. of tests			1	1
• SCCP (C10-C13)	[%]	<0.005	<0.003	<0.003
• SCCP (C10-13)	[mg/kg]	<50	<30	<30

#1	#2
9988 paste	9988C
for printing	paste for
white	printing
	light yellow

PFCs (Per- and polyfluorinated compounds) ECO PASSPORT by OEKO-TEX® Method 9 [ECP - testing items ECO PASSPORT by OEKO-TEX]		ECO PASSPORT threshold value	#1	#2
No. of tests			1	1
• PFOS	[mg/kg]	<0.50	<0.01	0.02
• PFOSA	[mg/kg]	<0.50	<0.01	<0.01
• PFOSF	[mg/kg]	<0.50	<0.10	<0.10
• N-Me-FOSA	[mg/kg]	<0.50	<0.01	<0.01
• N-Et-FOSA	[mg/kg]	<0.50	<0.01	<0.01
• N-Me-FOSE	[mg/kg]	<0.50	<0.10	<0.10
• N-Et-FOSE	[mg/kg]	<0.50	<0.10	<0.10
• PFOA	[mg/kg]	<0.50	<0.01	<0.01
• PFBA	[mg/kg]	<0.50	<0.01	<0.01
• PFPeA	[mg/kg]	<0.50	<0.01	<0.01
• PFHxA	[mg/kg]	<0.50	<0.01	<0.01
• PFHpA	[mg/kg]	<0.50	<0.01	<0.01
• PFNA	[mg/kg]	<0.50	<0.01	<0.01
• PFDA	[mg/kg]	<0.50	<0.01	<0.01
• PFUdA	[mg/kg]	<0.50	<0.01	<0.01
• PFDaA	[mg/kg]	<0.50	<0.01	<0.01
• PFTrDA	[mg/kg]	<0.50	<0.01	<0.01
• PFTeDA	[mg/kg]	<0.50	<0.01	<0.01
• PF-3,7-DMOA	[mg/kg]	<0.50	<0.01	<0.01
• PFBS	[mg/kg]	<0.50	<0.01	<0.01
• PFHxS	[mg/kg]	<0.50	<0.01	<0.01
• PFHpS	[mg/kg]	<0.50	<0.01	<0.01
• PFDS	[mg/kg]	<0.50	<0.01	<0.01
• 7HPFHpA	[mg/kg]	<0.50	<0.01	<0.01
• 4HPFUnA	[mg/kg]	<0.50	<0.01	<0.01
• 1H,1H,2H,2H-PFOS	[mg/kg]	<0.50	<0.01	<0.01
• 4:2 FTOH	[mg/kg]	<0.50	<0.10	<0.10
• 6:2 FTOH	[mg/kg]	<0.50	<0.10	<0.10
• 8:2 FTOH	[mg/kg]	<0.50	<0.10	<0.10
• 10:2 FTOH	[mg/kg]	<0.50	<0.10	<0.10
• 6:2 FTA	[mg/kg]	<0.50	<0.10	<0.10
• 8:2 FTA	[mg/kg]	<0.50	<0.10	<0.10
• 10:2 FTA	[mg/kg]	<0.50	<0.10	<0.10



#1	#2
9988 paste	9988C
for printing	paste for
white	printing
	light yellow

Chlorinated Benzenes & Toluenes ECO PASSPORT by OEKO-TEX® Method 12 [ECP - testing items ECO PASSPORT by OEKO-TEX]		ECO PASSPORT threshold value	#1	#2
No. of tests			1	1
• Chlorobenzene	[mg/kg]		0.30	0.28
• 2-Chlorotoluene	[mg/kg]		<0.01	<0.01
• 3-Chlorotoluene	[mg/kg]		<0.10	<0.10
• 4-Chlorotoluene	[mg/kg]		<0.10	<0.10
• 1,3-Dichlorobenzene	[mg/kg]		<0.10	<0.10
• Benzylchloride	[mg/kg]		<0.10	<0.10
• 1,4-Dichlorobenzene	[mg/kg]		<0.10	<0.10
• 1,2-Dichlorobenzene	[mg/kg]		<0.10	0.26
• 2,4-Dichlorotoluene	[mg/kg]		<0.10	<0.10
• 2,5-/ 2,6-Dichlorotoluene	[mg/kg]		<0.10	<0.10
• 1,3,5-Trichlorobenzene	[mg/kg]		<0.10	<0.10
• α,α-Dichlorotoluene	[mg/kg]		<0.10	<0.10
• 2,3-/ 3,4-Dichlorotoluene	[mg/kg]		<0.10	<0.10
• 1,2,4-Trichlorobenzene	[mg/kg]		<0.10	<0.10
• 1,2,3-Trichlorobenzene	[mg/kg]		<0.10	<0.10
• α,α,α-Trichlorotoluene	[mg/kg]		<0.10	<0.10
• 2,4,5-Trichlorotoluene	[mg/kg]		<0.10	<0.10
• 2,3,6-Trichlorotoluene	[mg/kg]		<0.10	<0.10
• 1,2,3,5-Tetrachlorobenzene	[mg/kg]		<0.10	<0.10
• 1,2,4,5-Tetrachlorobenzene	[mg/kg]		<0.10	<0.10
• α,2,6-Trichlorotoluene	[mg/kg]		<0.10	<0.10
• α,2,4-Trichlorotoluene	[mg/kg]		<0.10	<0.10
• 1,2,3,4-Tetrachlorobenzene	[mg/kg]		<0.10	<0.10
• α,3,4-Trichlorotoluene	[mg/kg]		<0.10	<0.10
• α,α,α,2-Tetrachlorotoluene	[mg/kg]		<0.10	<0.10
• Pentachlorobenzene	[mg/kg]		<0.10	<0.10
• 2,3,4,5,6-Pentachlorotoluene	[mg/kg]		<0.10	<0.10
• Hexachlorobenzene	[mg/kg]		<0.10	<0.10
• Sum	[mg/kg]	<10	0.3	0.54



#1
9988 paste
for printing
white

#2
9988C
paste for
printing
light yellow

Polycyclic Aromatic Hydrocarbons (PAH) ECO PASSPORT by OEKO-TEX® Method 13 [ECP - testing items ECO PASSPORT by OEKO-TEX]		ECO PASSPORT threshold value	#1	#2
No. of tests			1	1
• Naphthalene	[mg/kg]	<10	<0.10	<0.10
• Acenaphthylene	[mg/kg]		<0.10	<0.10
• Acenaphthene	[mg/kg]		<0.10	<0.10
• Fluorene	[mg/kg]		<0.10	<0.10
• Phenanthrene	[mg/kg]		<0.10	<0.10
• Anthracene	[mg/kg]		<0.10	<0.10
• Fluoranthene	[mg/kg]		<0.10	<0.10
• Pyrene	[mg/kg]		<0.10	<0.10
• 1-Methylpyrene	[mg/kg]		<0.10	<0.10
• Cyclopenta[cd]pyrene	[mg/kg]		<0.10	<0.10
• Benzo[a]anthracene	[mg/kg]	<5.0	<0.10	<0.10
• Chrysene	[mg/kg]	<5.0	<0.10	<0.10
• Benzo[b]fluoranthene	[mg/kg]	<5.0	<0.10	<0.10
• Benzo[k]fluoranthene	[mg/kg]	<5.0	<0.10	<0.10
• Benzo[j]fluoranthene	[mg/kg]	<5.0	<0.10	<0.10
• Benzo[e]pyrene	[mg/kg]	<5.0	<0.10	<0.10
• Benzo[a]pyrene	[mg/kg]	<5.0	<0.10	<0.10
• Dibenzo[ah]anthracene	[mg/kg]	<5.0	<0.10	<0.10
• Indeno[1,2,3-cd]pyrene	[mg/kg]		<0.10	<0.10
• Benzo[ghi]perylene	[mg/kg]		<0.10	<0.10
• Dibenzo[ae]pyrene	[mg/kg]		<0.10	<0.10
• Dibenzo[al]pyrene	[mg/kg]		<0.10	<0.10
• Dibenzo[ai]pyrene	[mg/kg]		<0.10	<0.10
• Dibenzo[ah]pyrene	[mg/kg]		<0.10	<0.10
• Sum	[mg/kg]	<50	<0.01	<0.01

#1	#2
9988 paste	9988C
for printing	paste for
white	printing
	light yellow

Surfactants, Wetting Agent Residues ECO PASSPORT by OEKO-TEX® Method 15 [ECP - testing items ECO PASSPORT by OEKO-TEX]		ECO PASSPORT threshold value	#1	#2
No. of tests			1	2
• Pentylphenol (PeP)	[mg/kg]		<0.1	<0.1
• Heptylphenol (HpP)	[mg/kg]		<0.1	<0.1
• Octylphenol (OP)	[mg/kg]		<0.1	<0.1
• Nonylphenol (NP)	[mg/kg]		<0.1	<0.1
• Sum AP	[mg/kg]	<50	<0.1	<0.1
• Octylphenoethoxylate (OPEO)	[mg/kg]		<1.0	<1.0
• Nonylphenoethoxylate (NPEO)	[mg/kg]		<1.0	<1.0
• Sum AP & APEO	[mg/kg]	<250	<0.1	<0.1

#1	#2
9988 paste	9988C
for printing	paste for
white	printing
	light yellow

VOCs (Volatile Organic Compounds) ECO PASSPORT by OEKO-TEX® Method 19 [ECP - testing items ECO PASSPORT by OEKO-TEX]	ECO PASSPORT threshold value	#1	#2
No. of tests		1	1
• Bis(2-methoxyethyl)ether [mg/kg]	<=50	<1.0	<1.0
• 2-Ethoxyethanol [mg/kg]	<=50	<1.0	<1.0
• 2-Ethoxyethylacetate [mg/kg]	<=50	<1.0	<1.0
• Ethylene glycol dimethyl ether [mg/kg]	<=50	<1.0	<1.0
• 2-Methoxyethanol [mg/kg]	<=50	<1.0	<1.0
• 2-Methoxyethylacetate [mg/kg]	<=50	<1.0	<1.0
• 2-Methoxypropylacetate [mg/kg]	<=50	<1.0	<1.0
• Triethylene glycol dimethyl ether [mg/kg]	<=50	<1.0	<1.0
• 1,1-Dichloroethane [mg/kg]	<=10	<1.0	<1.0
• 1,2-Dichloroethane [mg/kg]	<=5.0	<1.0	<1.0
• Dichloromethane [mg/kg]	<=5.0	<1.0	<1.0
• Tetra(per)chloroethylene [mg/kg]	<=5.0	<1.0	<1.0
• Trichloroethylene [mg/kg]	<=10	<1.0	<1.0
• Benzene [mg/kg]	<=50	<1.0	<1.0
• Xylene (all isomers) [mg/kg]	<=100	<1.0	<1.0
• o-Cresol [mg/kg]	<=100	<1.0	<1.0
• Chloroform [mg/kg]	<=10	<1.0	<1.0
• Tetrachloromethane [mg/kg]	<=10	<1.0	<1.0
• 1,1,1-Trichloroethane [mg/kg]	<=10	<1.0	<1.0
• 1,1,2-Trichloroethane [mg/kg]	<=10	<1.0	<1.0
• 1,1,1,2-Tetrachloroethane [mg/kg]	<=10	<1.0	<1.0
• 1,1,2,2-Tetrachloroethane [mg/kg]	<=10	<1.0	<1.0
• Pentachloroethane [mg/kg]	<=10	<1.0	<1.0
• 1,1-Dichloroethylene [mg/kg]	<=10	<1.0	<1.0
• 1,2-Dichloroethylene [mg/kg]	<=10	<1.0	<1.0
• Methyl ethyl ketone [mg/kg]	<=100	<1.0	<1.0
• Ethylbenzene [mg/kg]	<=100	<1.0	<1.0
• Cyclohexanone [mg/kg]	<=100	<1.0	<1.0
• 1,2,3-Trichloropropane [mg/kg]	<=100	<1.0	<1.0
• Acetophenone [mg/kg]	<=100	<1.0	<1.0
• 2-Phenyl-2-propanol [mg/kg]	<=100	<1.0	<1.0
• Styrene [mg/kg]	<=100	<1.0	<1.0
• Toluene [mg/kg]	<=100	<1.0	<1.0
• p+m-Cresol [mg/kg]	<=100	<1.0	<1.0

ECO PASSPORT SCREENING REPORT

The Global RSL and MRSL Search and Screen Tool

ECO PASSPORT Screening is used to screen chemical products – at the ingredient level – against the world's leading restricted substance lists and manufacturing restricted substance lists:

- STANDARD 100 by OEKO-TEX® Restricted Substance List (RSL)
- ECO PASSPORT by OEKO-TEX® Restricted Substance List (RSL)
- STeP by OEKO-TEX® Manufacturer Restricted Substance List (MRSL)
- REACH Substances of Very High Concern (SVHC)

The product components, main constituents and impurities declared by the applicant are not mentioned on the MRSL of ZDHC.

Company

Dongguan Changlian New Materials Technology Co., Ltd.
Sanlian Science Park,
Jingxiang Liaobu Town,
Dongguan, Guangdong, CHINA

Category: Textile auxiliaries for dyeing and printing

Certificate No: BEXA 081903

Issued by: TESTEX AG, Swiss Textile Testing Institute

ECO PASSPORT SCREENING SYNOPSIS

The following product(s) are suitable for ECO PASSPORT analytical verification:

Clear printing paste: 9988C, 6800C, 2900C, 3900C, 1500C, 608C, 609C, S626, E40, 400C, 3711C, 655C, 203C, 2277C, 3399C, 9433C, 300C, 6900C, 135C, 308C, H222C, 511C, 9422C, 2288C, 2299C, 9140C, L40, GN40, PTF-312E, M1206, M1204, 985, B-1000: Clear printing paste, White printing paste: 9988, 6800, 2900, 3900, 1500, 608, 609, 388, 399, 400, 3711, 655, 203, 2277, 3399, 9433, 300, 6900, 135, 308, H222, 511, 9422, 2288, 2299, 9140, 4511, 888, 299, 368, CP810, SL-200, H6000: white printing paste

The following product(s) are not suitable according to the RSL screening:

None

Information disclosure level: **ADVANCED**

The screening has been conducted against the above mentioned Restricted Substances Lists valid on 30.04.2019